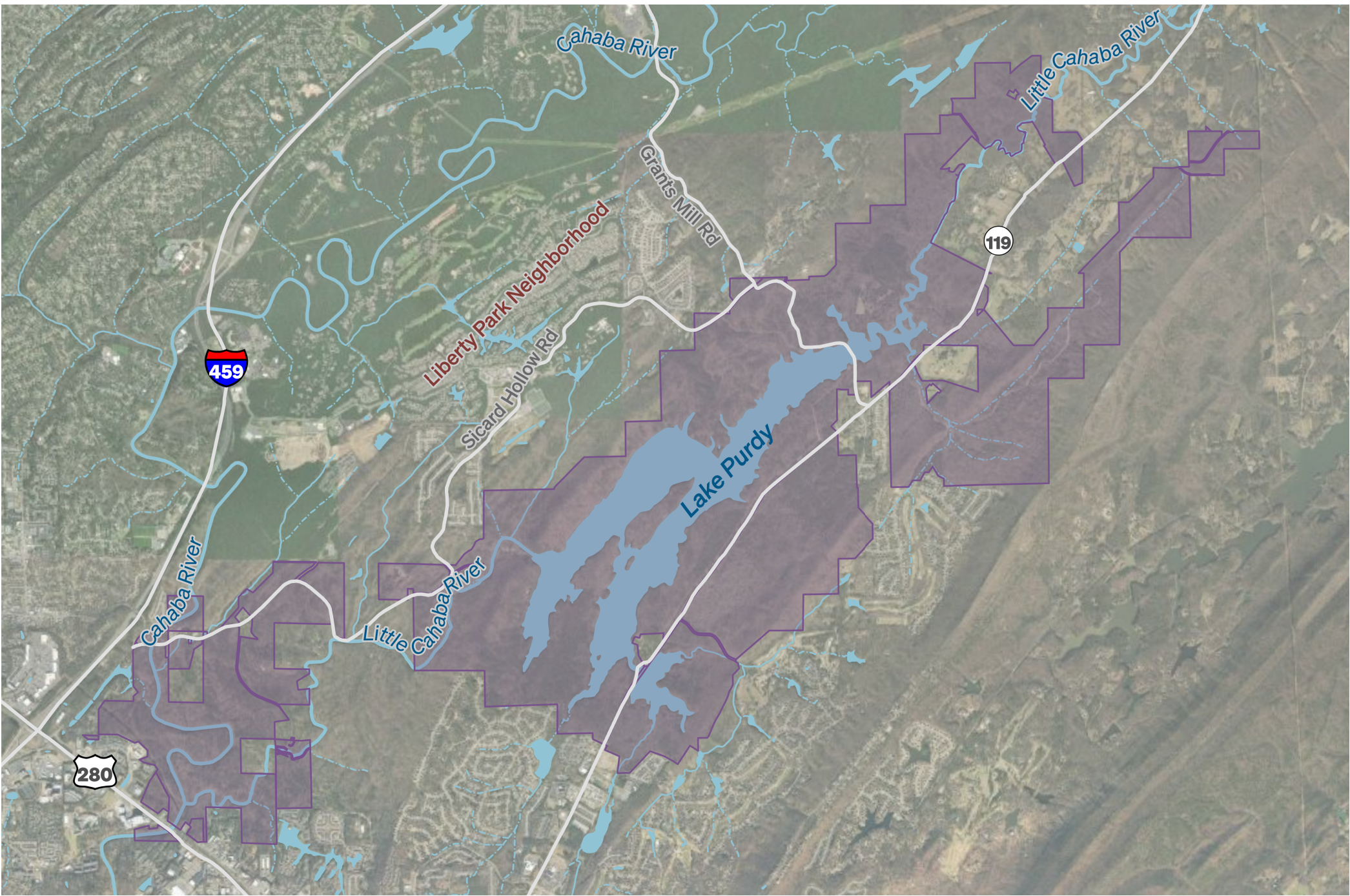


# Birmingham Water Works Board Protected Land



Map created by: Miller Cochran (mcochran@selcnc.org)  
Last updated: July 20, 2023  
Source: G-Squared, LLC, Maxar, The Water Works Board of the City of Birmingham, USGS  
Note: Protected lands are representational only; protected areas not drawn to survey standards.

