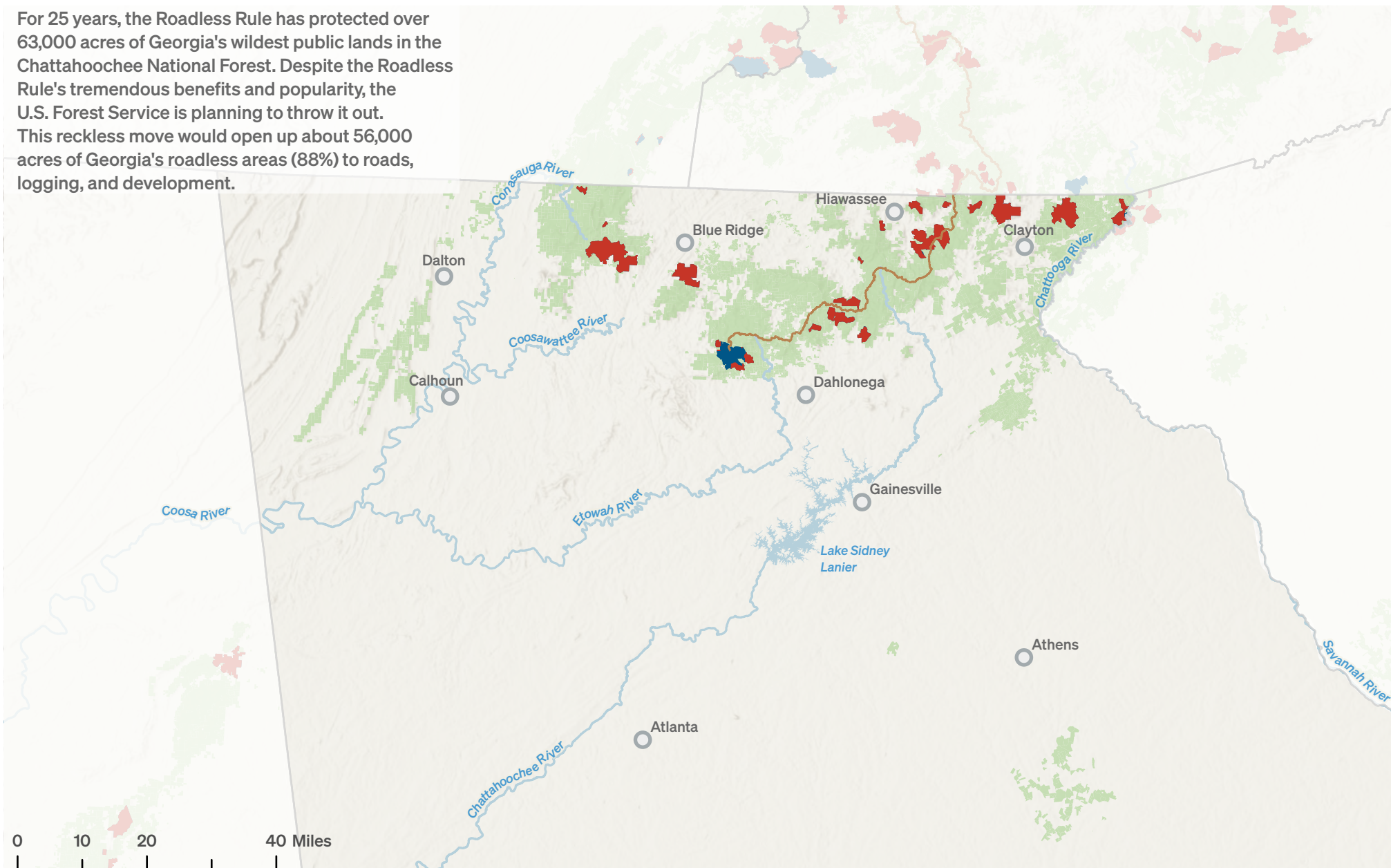


Georgia Roadless Areas Under Threat

For 25 years, the Roadless Rule has protected over 63,000 acres of Georgia's wildest public lands in the Chattahoochee National Forest. Despite the Roadless Rule's tremendous benefits and popularity, the U.S. Forest Service is planning to throw it out. This reckless move would open up about 56,000 acres of Georgia's roadless areas (88%) to roads, logging, and development.



Legend

- Roadless areas that lose protection if Roadless Rule is repealed
- Roadless areas protected by overlapping Congressional designation

- National Forest lands that are not roadless areas
- Appalachian National Scenic Trail

Map created by: Miller Cochran, GISP
(mcochran@selcnc.org)
Last updated: 3/3/2026
Sources: US Forest Service, USGS, NPS

